

Byron Drive
London, N2 0BD
£4,750,000



An impressive (5432 sq ft) detached family house set behind electric gates, in this highly sought after location directly off The Bishops Avenue. Well presented and in good order, throughout, the property comprises 5 double bedrooms all with ensuite bathrooms. Large family eat in kitchen, leading to conservatory. There are a further four reception rooms. The accommodation is extremely flexible and well planned, with one of the bedrooms having an ensuite bathroom and reception room, ideal for housekeeper, teenager, guests etc. Double garage, with electric car charger and automatic door. Large easily managed garden.

- Five bedroom detached house
- All bedrooms with ensuite bathrooms
- 4 reception rooms
- Eat in kitchen
- Conservatory
- Double garage
- Extremely adaptable accommodation
- 5432 sq ft

Byron Drive
London, N2 0BD
£4,750,000



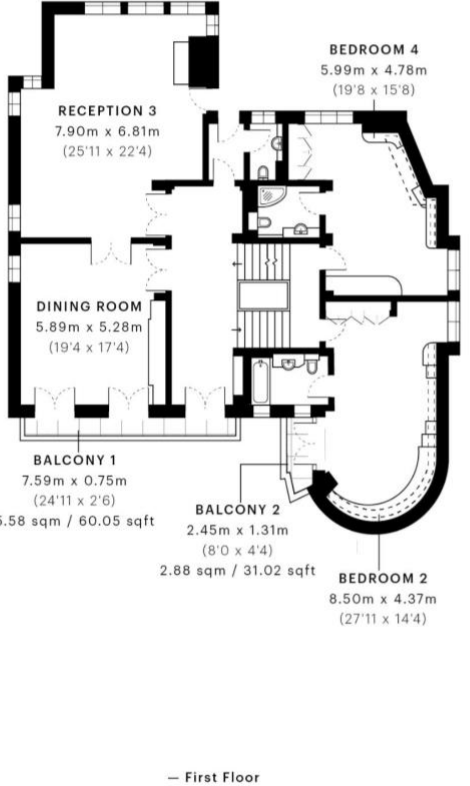
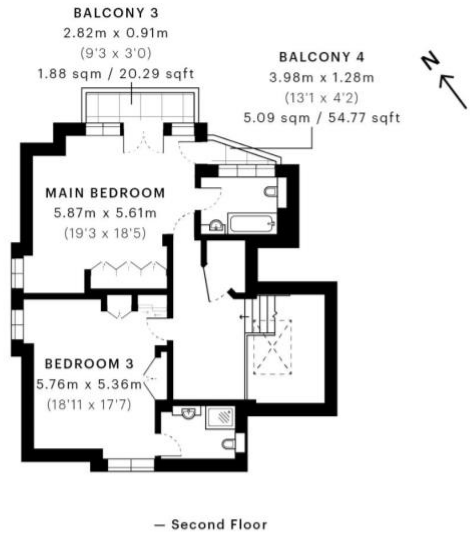
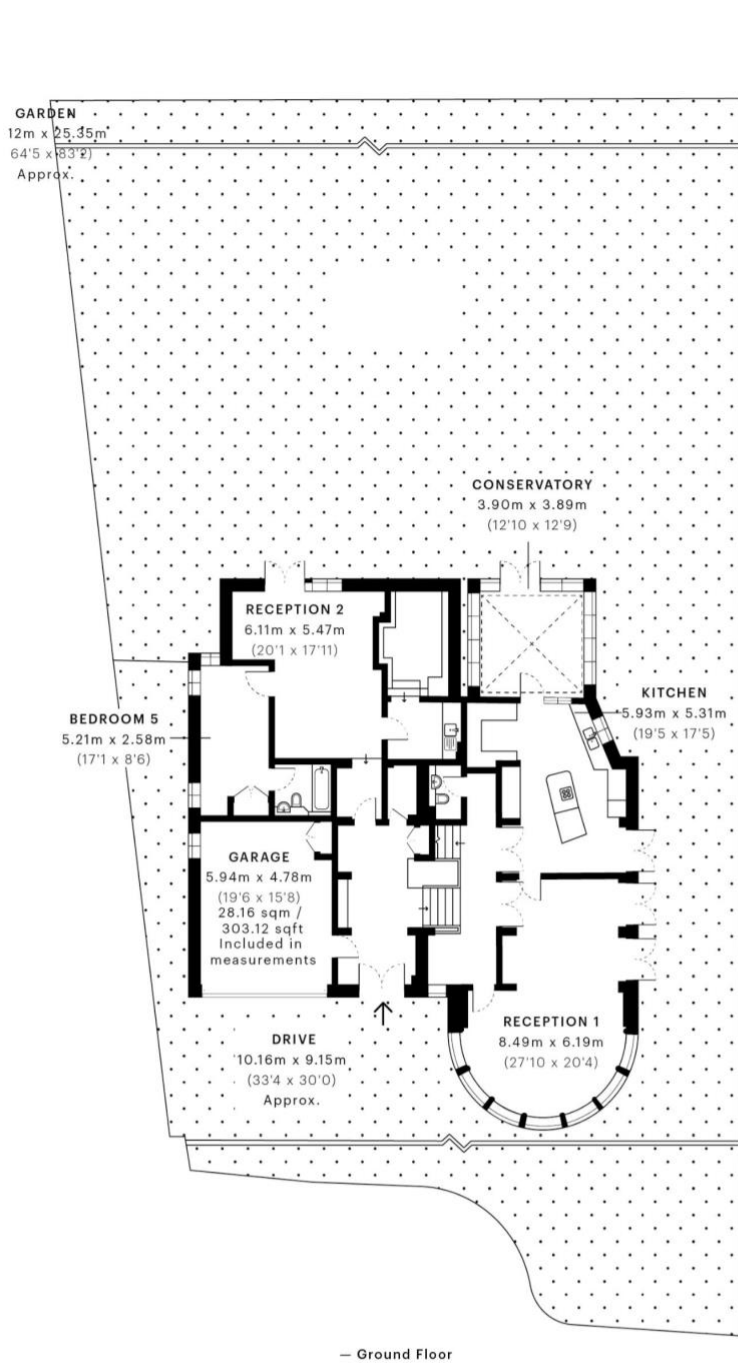
Byron Drive
London, N2 0BD
£4,750,000



Byron Drive
London, N2 0BD
£4,750,000



Byron Drive
 London, N2 0BD
 £4,750,000



	GROSS INTERNAL AREA (GIA) The footprint of the property 504.68 sqm / 5432.33 sqft		NET INTERNAL AREA (NIA) Excludes walls and external features Includes washrooms, restricted head height 436.00 sqm / 4693.06 sqft		EXTERNAL STRUCTURAL FEATURES Balconies, terraces, verandas etc. 15.28 sqm / 164.47 sqft		RESTRICTED HEAD HEIGHT Limited use area under 1.5 m 2.88 sqm / 31.00 sqft
--	--	--	---	--	--	--	--



Spec Verified floor plans are produced in accordance with Royal Institution of Chartered Surveyors' Property Measurement Standards. Plots and gardens are illustrative only and excluded from all area calculations. Due to rounding, numbers may not add up precisely. All measurements shown for the individual room lengths and widths are the maximum points of measurements captured in the scan.

IPMS 3B RESIDENTIAL 513.43 sqm / 5526.51 sqft
 IPMS 3C RESIDENTIAL 486.07 sqm / 5232.01 sqft

SPEC ID 6214f12937d8120dd88577dd